



**SSD 6000 CD**

## Digital Color Doppler Ultrasound

# SSD 6000 CD

**COLOR DOPPLERS**  
Made in India

## ICONIC Professional Series: SSD 6000 CD

- ★ SSD 6000 CD: our latest ICONIC series provides remarkable performance in Abdomen, Gynecology, Obstetric, Cardiology, Small parts (Breast, Testes, Thyroid, etc.), Urology, Musculoskeletal and Peripheral vascular
- ★ Extended Imaging (Efov), Zpage, Zlive, B steer, Panoramic Imaging
- ★ 2D, CFM, M, PW, CW, CMM, PDI, DPDI, Anatomical M, Biopsy function, Real-time 3D/4D
- ★ Auto IMT, TSI, THI, SRI, SCI, FCI, Biopsy function
- ★ 21.5 inch high resolution LCD TFT display with tilt & swivel facility, viewable in all lighting conditions
- ★ Efficient multi-function 13.3 inch Touch Screen console with alphanumeric keyboard backlit display
- ★ Multiple user defined programming buttons & digital calipers
- ★ One Key Imaging Auto Optimization
- ★ One key operation flow, quick switching and easy to use
- ★ Visualize user-defined presets function
- ★ PW auto trace and auto calculation
- ★ USB 3.0 ports, built-in DVD R/W, supporting multi-data transmission
- ★ Meta Data and image pre & post processing facility
- ★ On-screen annotations, exam presets, customize presets facility
- ★ High definition digital acquisition, review and editing of complete patient studies
- ★ Parameter saving / presetting
- ★ DICOM 3.0 connectivity
- ★ PC connectivity



# SSD 6000 CD

Digital Color Doppler Ultrasound



## Iconic Series Advanced Technologies:

### Meta data beam-forming

**SSD 6000 CD** assures accurate diagnosis based on metadata beam-forming imaging technology. This ultra-new platform is developed by CPU + GPU heterogeneous computing technology. This platform saves images as metadata for post processing.

### Pulse Inverse Harmonic Imaging PIHI

PIHI reduces the distortion generated by the fundamental wave, and greatly improve the signal-to-noise ratio.

### Speckle Reduction Imaging

SRI technology significantly reduces the unwanted speckle, provides improved tissue boundary and tissue echo for confident clinical diagnosis.

### Spatial Compound Imaging

SCI provides better contrast resolution, reduces the speckle noise and smoothes the imaging of homogeneous tissue.



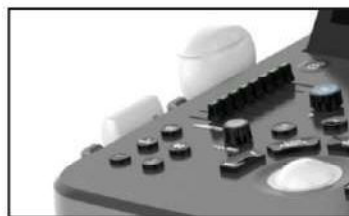
21.5" medical LCD monitor  
- Angle adjustable  
- Foldable



13.3" high sensitivity touch screen  
- Angle adjustable



Optimized control panel  
- Angle adjustable  
- Height adjustable



Optimized TGC Area  
- Left placement



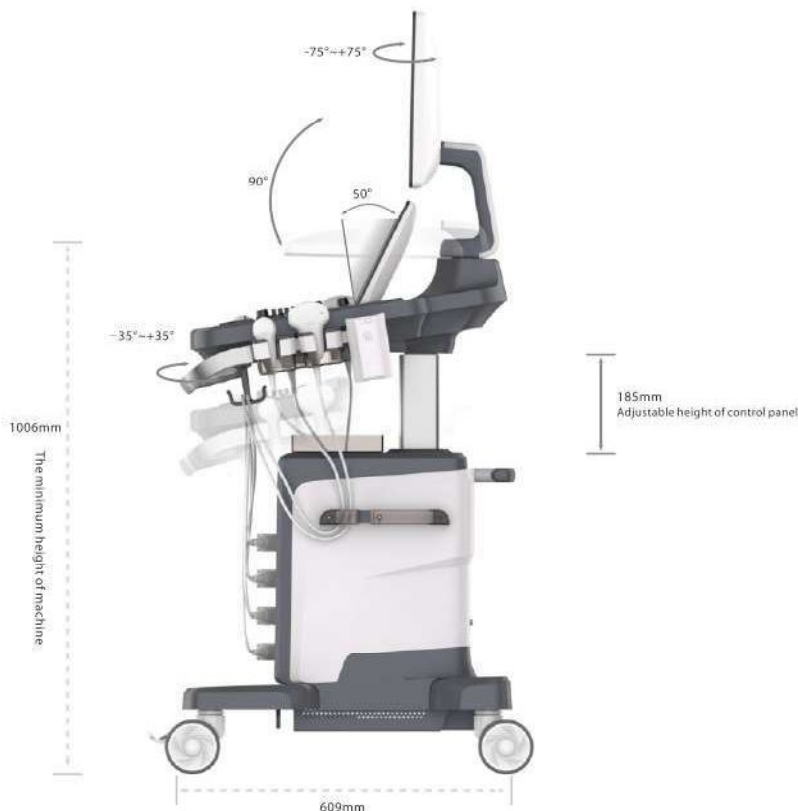
4 universal transducer connectors



Cable Management

## Technical Specifications:

Display	21.5" high resolution medical grade LCD TFT monitor with tilt with swivel & Twin view
Touch Screen	13.3" high sensitivity color touch screen with 60 degree tilt angle
Scanning Mode	Electronic Convex, Linear, TV, TR, Micro-convex, Phased Array Cardiac etc (provided as per demand)
Imaging Mode	B mode, M mode, Color Doppler, Power Doppler Imaging (PDI), Directional PDI, PW, CW, 3D/4D
Probe Connector	Four active universal probe connectors
Probe Frequency	Multiple default modes; Frequency Range : 1 ~ 19 MHz; Probe elements : 128; FOV TV Probe : >160 degree
Gain Control	0-100dB, Overall Gain Control, 8 step TGC
Hard Drive	Built-in 1 TB hard disk & 120 GB SSD as separate devices
Depth & Dynamic range	1-42 cm (depends upon the type of probe); up to 180 dB
Advance Technology	Spatial Compound Imaging, Speckle Reduction Imaging, Inverse harmonic imaging technique, Tissue Harmonic Imaging (THI), Tissue Doppler Imaging (TDI), Tissue Adaptive Imaging, Panoramic Imaging, Trapezoidal Imaging, IMT - Internal Median Thickness, Digital Multi-Beam forming, B Steer, M steer, Auto Doppler Trace
Grey Scales	256
Clinical Applications	Abdomen, Gynecology, Obstetrics, Small organs, Heart, MSK, Urology, Pediatric & Vascular applications
Zoom / PAN	Zoom magnification in real-time & frozen modes with PAN facility
DICOM	Support DICOM 3.0 connectivity & interfability to PACS
Digital Channels	>7,00,000
Cine loop & Frame rate	Cine playback: 5,000 frames; Frame rate: 1000 fps
Power Source	100-240V AC, 50/60 Hz; Resettable over current breaker
Battery	Built-in rechargeable battery with 2 hours backup
Environmental	Operating Temp.: 0-50 degree C, Relative Humidity : 15-90%
Peripherals	I/O ports : USB 2.0 ports - 4, S-video - 1, HDMI - 1, Ethernet / LAN - 1
Hardware	Processor - i7; RAM - 4GB; Speed - 3GHz
Optional	Biopsy Guide, B/W Thermal Printer, Color Laser Printer, Inkjet Printer, UPS, Servo stabilizer, Carry case, Training Module etc.



Mfd. & Mktd. in India by:

**S.S. MEDICAL SYSTEMS (I) PVT. LTD.**

MSME Manufacturing License No.: 05110000488 | Class-1 Local Supplier

**Manufacturing Unit** : #F2, Bhimtal Industrial Estate, Bhimtal, Nainital, Uttarakhand-263136 | Tel: +91 5942 248138, Mob.: 09839022234

**National Sales Office**: P-1, Ground Floor, #233, Buildcon Apartment, Shahpur, Jat, New Delhi-110049 | Tel: +91 11 41060439, 08090075719  
Email: mamta@ssmedworld.com Website: www.ssmedworld.com



Authorized Distributor



Due to continuous research & development, images shown in this catalogue is only for depiction, however actual product may slightly differ from the images shown here. This is our standard product catalogue, however, if required, the detailed technical data sheet can be submitted on demand.



**Uttarakhand**

# 09639060683

**Delhi**

# 08090075719

**Lucknow**

# 09792444111

**Mumbai**

# 09452010000

**Bangalore**

# 08948122222

**Guwahati**

# 09415937232

**HELPLINE**  
**24x7**  
09838202281

**Overseas**



**Dubai Office:**  
P.O. Box 922,  
Dubai,  
U.A.E.  
Ph: # 0097 1504967256



**U.S.A. Office**  
287 Stillwater Drive,  
Yuba City,  
CA 95691  
Ph: # 415 407 5108



**U.K.**  
Room No. 004-A, Central Village,  
Block A, Woodhouse Lane,  
Leeds, LS2, 3AB  
Ph: # 0044-7795536498

**Business Portfolio**

**Human Equipments**

**Veterinary Equipments**

**BMW Management**

**Hospital Furniture**

**OptiMaser®**

**Swachh Lab™**

**PSA Oxygen Generator**